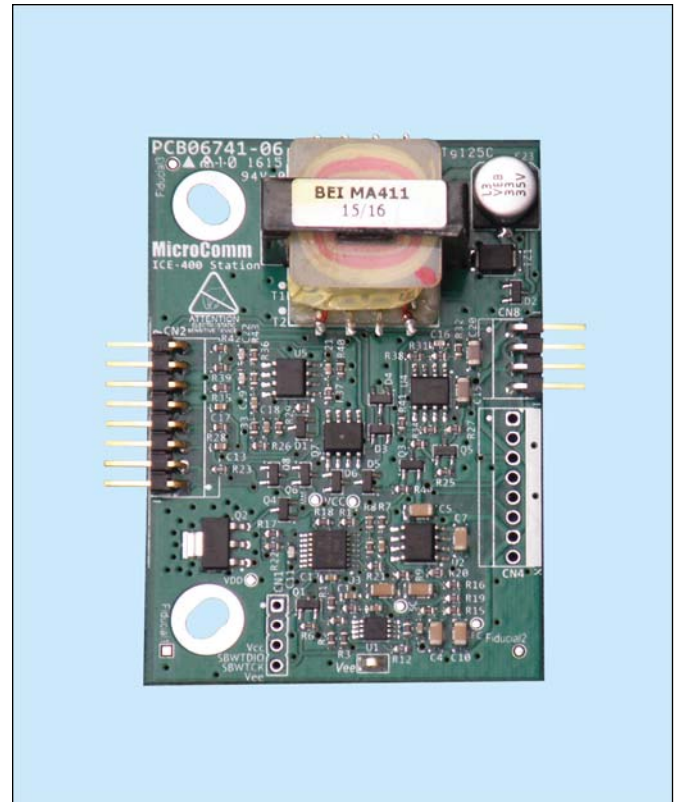


IEB-400
Intercom Board**Description**

The IEB-400 Intercom Board is used to interface with 8 ohm intercom stations, or with 8 ohm ceiling speakers and an external call switch, to obtain the full quality and performance of a MicroComm intercom station. Standard mounting holes with 2.13" spacing are used for mounting via nylon standoffs directly to station loudspeakers. Insulated versions with Velcro strips are used with overhead loudspeakers, parking gate pedestals and other similar applications.

Features

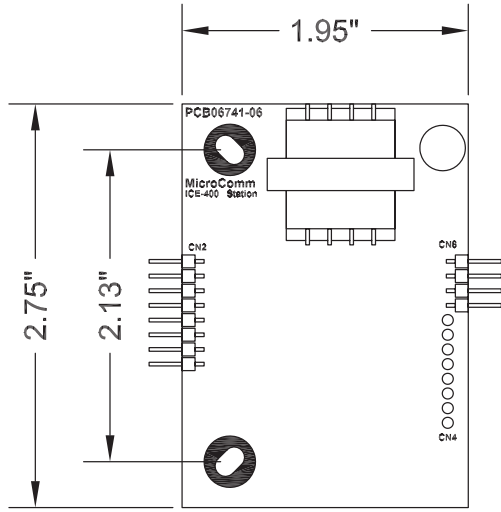
- internal termination circuitry for line supervision to detect open and short circuit wiring faults
- half duplex audio channel to the intercom station
- internal preamplifier for superior audio sensitivity and crosstalk immunity
- switch interfaces with MTA headers
- can be used to retrofit existing stations into stations that are compatible with a DXI or DXL system
- single shielded twisted pair 22 ga cabling for audio and switch(es)
- interfaces directly to a 8-ohm loudspeaker
- not recommended for compression driver type loudspeakers

**Specifications**

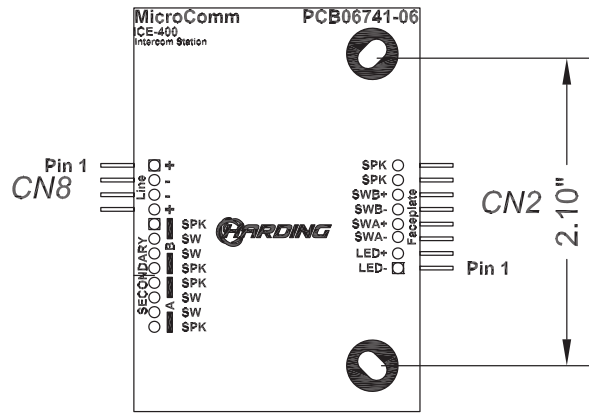
Physical Form Factor

1.95" x 2.75" printed circuit board
(50 x 70 mm)

Mechanical



Component Side



Back Side

Ordering Information

Part number IEB-400-AB

- A package options
 - 1 standard
 - 2 insulated
- B weather resistant options
 - 1 normal
 - 2 weather resistant



9564 Yellowhead Trail NW Tel 780.462.7100
 Edmonton, AB T5G 0W4 Fax 780.450.8396
 sales@harding.ca www.harding.ca



Represented by: